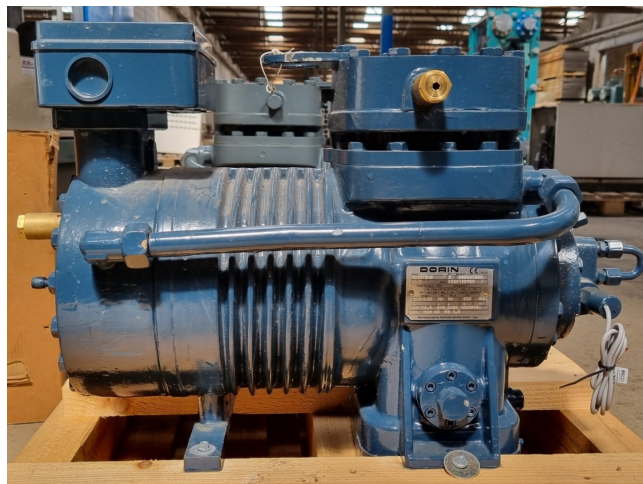


Dorin SCS373-D

Specifications

| | |
|--------------------|---|
| Brand | Dorin |
| Type | SCS373-D |
| Refrigerant | CO2 |
| Refrigerant type | R744 |
| kW at 0°C/+40°C | 56,1* |
| kW at -5°C/+40°C | 48,1* |
| kW at -10°C/+40°C | 41,4* |
| kW at -20°C/+40°C | 29,0* |
| kW at -30°C/+40°C | 19,6* |
| Electromotor Specs | 50 Hz - 18,5 kW - 2900 RPM |
| Sight Glass | ✓ |
| m3 / h | 12,7 |
| Remarks | * Capacities refer to subcritical operation conditions and a condensing temperature of 15°C |
| Weight in kg. | 155 |
| Sizes | 700x350x450 mm (LxWxH) |
| Stock | 1 |



Description

Used Dorin SCS373-D

New Dorin SCS373-D semi-hermetic reciprocating compressor for CO2. The compressor has a displacement of 12,7 m³/h.

*Why choose for HOSBV? We are not only the largest used refrigeration specialist in Europe, but also, we deliver all equipment including an extensive test, warranty and an industrial cleaning. *Optionally we can also perform a new paint job and arrange the logistics.

